

Model

Designation	NF11FX	115-127V/60Hz 1~	Sales code:	105G5958
-------------	---------------	------------------	-------------	-----------------

Compressor design

Oil type	Polyolester	Refrigerant(s)	R134a
Oil viscosity	32cST	Displacement	11,15cm ³ / 0,68cu.in
Oil quantity	294cm ³ / 10fl.oz	Compressors on pallet	80
Refr. charge - tech. limit	400g / 14,1oz		
Free gas volume comp.	2360cm ³ / 79,8fl.oz		
Weight	10,5kg / 23,1lbs		
Motor protection	external		
Winding resistance main	1Ω (at 25°C)		
Winding resistance aux	3,6Ω (at 25°C)		
Max. winding temp.	125°C / 257°F		
Max. discharge temp.	130°C / 266°F		



General - Configurations with NF11FX

	Conf. 1
Motorconfiguration	CSIR
Power supply (nominal)	115V/60Hz
Number of phases	1
Voltage range	95-135V
Approvals	UL, EAC
Starting torque	HST
Note	- / -

Applications with NF11FX

	Conf. 1
Refrigerant	R134a
Application	LBP+MBP
System cooling	fan 3m/s
Hot gas defrost	OK
Long interval pull down	OK

Electrical data - Configurations with NF11FX

	Conf. 1
Starting device type	relay
Run capacitor	-/-
Start capacitor	410μF
LRA (locked rotor amps / 4s)	43,1A
RLA (rated load amps / 1s)	7,6A
Cut in current	43,1A
IP class	21

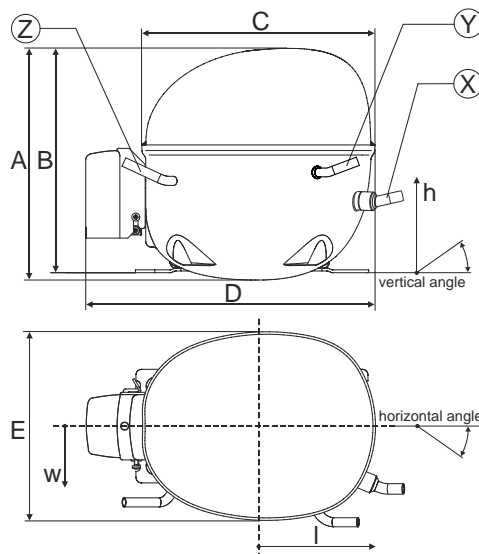
Model

Designation	NF11FX	115-127V/60Hz 1~	Sales code:	105G5958
-------------	---------------	------------------	-------------	-----------------

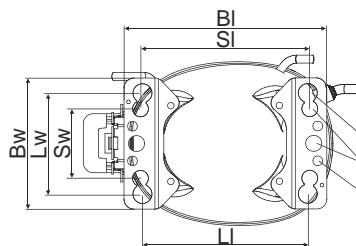
Compressor dimensions

Housing	A Height	203mm / 7,99in
	B Height	197mm / 7,76in
	C Length shell	205mm / 8,07in
	D Length w. cover	254mm / 10in
	E Width	166mm / 6,54in

Connectors	Suction	Discharge	Process
	X	Y	Z
Diameter [mm]	øi 8,11-8,29	øi 6,41-6,59	øi 6,41-6,59
(i:inside, o:outside) [in]	øi 0,32-0,33	øi 0,25-0,26	øi 0,25-0,26
Material	steel/CU	steel/CU	steel/CU
Horizontal angle ±2°	0°	0°	0°
Vertical angle ±2°	15°	35°	155°
Position l/h/w [mm]	126/76/78	133/103/54	-107/94/72
[in]	4,9/3/3,1	5,2/4/2,1	-4,2/3,7/2,8
Straight tube l.	[mm]	12	12
	[in]	0,5	0,5

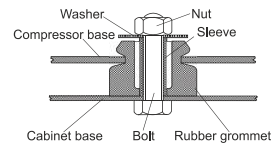


Compressor fixation

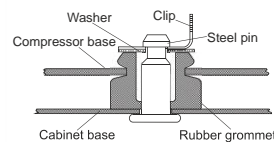


Baseplate	[mm]	[inch]
BI	204	8.03
Bw	132	5.2
øE	ø 9,7	ø 0,38
Large holes	[mm]	[inch]
LI	165	6.5
Lw	101.6	4
øL	ø 19	ø 0.75
Small holes	[mm]	[inch]
SI	170	6.7
Sw	70	2.76
øS	ø 16	ø 0.63

Bolt joint



Snap-on



Mounting accessories	one comp.	multi pack
Bolt joint M6 ø16mm	118-1917	118-1918
Bolt joint ø1/4" ø16mm	118-1946	
Bolt joint ø1/4" ø19mm	118-1949	
Snap-on ø7,3 ø16mm	118-1947	118-1919

Application notes

LRA value on compressor label and datasheet may differ due to different test conditions for UL approval.

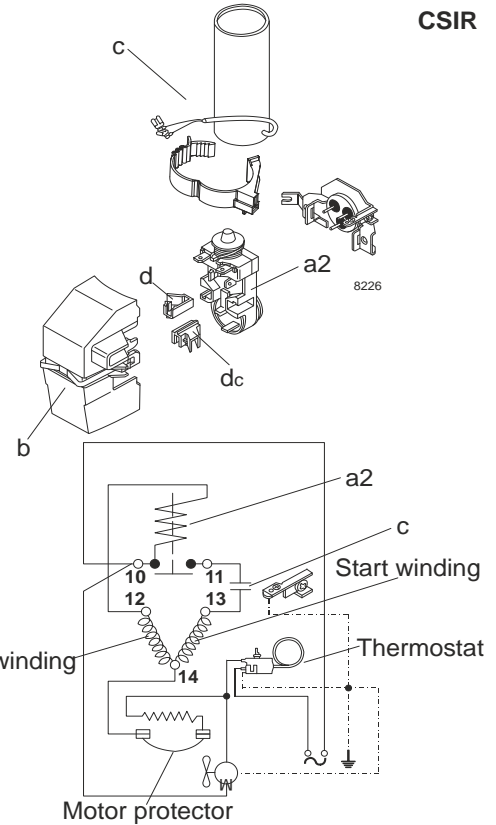
Model

Designation	NF11FX	115V/60Hz	Conf. 1	Sales code:	105G5958
-------------	--------	-----------	---------	-------------	----------

Configuration

Motorconfiguration	CSIR
Power supply (nominal)	115V/60Hz 1~
Refrigerant	R134a
Application	LBP+MBP
Voltage range	95-135V
Starting torque	HST
Approvals	UL
	EAC

Electrical accessories / wiring diagram

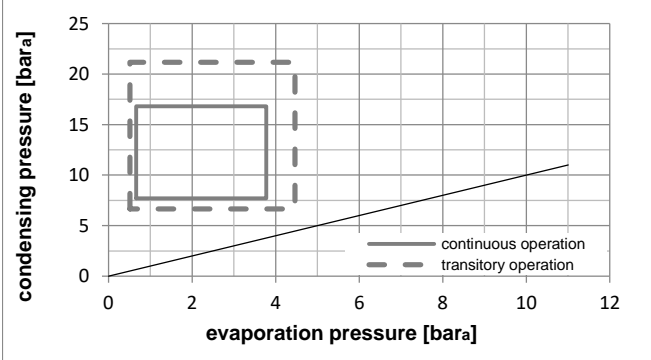
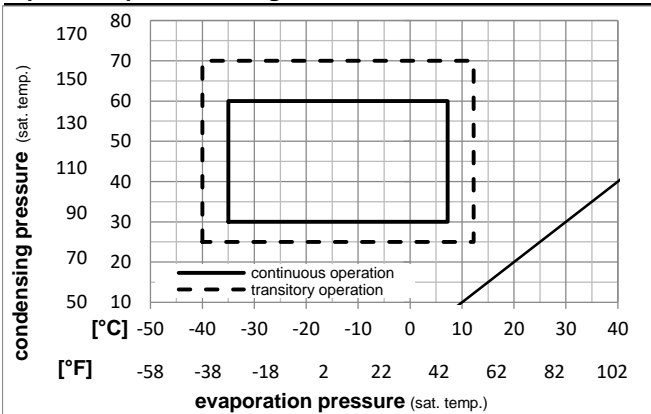


Ambient temperatures / system cooling

Ambient temperature min.:	10°C / 50°F
Ambient temperature max.:	43°C / 110°F

System cooling (n/a: outside limits)			
T ambient	LBP	MBP	HBP
32°C / 90°F	fan 3m/s	fan 3m/s	n/a
38°C / 100°F	fan 3m/s	fan 3m/s	n/a
43°C / 110°F	fan 3m/s	fan 3m/s	n/a

Operation pressure range



Components

a2	current relay	117U4123
c	start capacitor (410µF)	117U5028
b	plastic cover	117U1021
d/dc	cord relief	117U0349
d/dc	cord relief	117U0349

Model

Designation	NF11FX	115V/60Hz	Conf. 1	Sales code:	105G5958
-------------	---------------	------------------	----------------	-------------	-----------------

Optimization + standard conditions

115V/60Hz, CSIR, fan 3m/s, UL, EAC

Evaporating pressure (saturation temperature)					Condensing pressure (saturation temperature)						Power consumption				ASHRAE LBP
					Return gas temp.						Current consumption				
					Liquid temp.						Ref. mass flow				
pe	pc	RGT	Tliq		W	[Btu/h]	[kcal/h]	COP	EER	[Btu/Wh]	[kcal/Wh]	P1	I	m	
[°C]	[°F]				[W]	[Btu/h]	[kcal/h]	[W/W]	[Btu/Wh]	[kcal/Wh]	[W]	[A]	[kg/h]		
-23,3	54,4	32,2	32,2		322,2	1100	277,3	1,09	3,72	0,94	295,4	4,81	6,26	ASHRAE LBP	
-10	130	90	90												
-25	55	32	55		237,0	810	204,0	0,84	2,86	0,72	282,9	4,72	5,67	cecomaf LBP	
-13	131	89,6	131												
-35	40	20	40		148,6	507	127,9	0,73	2,51	0,63	202,6	4,34	3,26	EN12900 LBP	
-31	104	68	104												
-23,3	48,9	4,44	48,9		257,9	881	222,0	0,89	3,02	0,76	291,3	4,79	6,81	ARI540 LBP	
-10	120	40	120												
-23,3	40,6	32,2	32,2		344,7	1177	296,6	1,21	4,14	1,04	284,3	4,75	6,69	AHAM LBP	
-10	105	90	90												
-35	45	32	45		135,3	462	116,4	0,66	2,24	0,56	206,5	4,31	2,92	opt	
-31	113	89,6	113												

Performance tables

115V/60Hz, CSIR, fan 3m/s, UL, EAC

	pe	Cooling capacity			COP	EER	P1	I	m		
	[°C]	[°F]	[W]	[Btu/h]	[kcal/h]	[W/W]	[Btu/Wh]	[kcal/Wh]	[W]	[A]	[kg/h]
[°C / °F]	-35	-31	135,3	462	116,4	0,66	2,24	0,56	206,5	4,31	2,92
cond. pressure	-23,3	-10	299,6	1023	257,8	1,04	3,55	0,90	288,0	4,77	6,50
pc= 45/113	-15	5	470,5	1607	404,9	1,34	4,56	1,15	352,4	5,17	10,26
return gas temp.	-9,4	15	616,2	2104	530,3	1,55	5,30	1,34	396,8	5,47	13,49
RGT= 32/90	-3,9	25	791,7	2704	681,3	1,79	6,12	1,54	441,5	5,79	17,43
liquid temp	0	32	934,2	3190	804,0	1,98	6,75	1,70	472,7	6,02	20,66
Tliq= 45/113	7,2	45	1246,6	4257	1072,8	2,36	8,04	2,03	529,2	6,50	27,85
[°C / °F]	-35	-31	113,9	389	98,0	0,53	1,81	0,46	215,0	4,23	2,71
cond. pressure	-23,3	-10	261,8	894	225,3	0,89	3,02	0,76	295,8	4,81	6,27
pc= 55/131	-15	5	409,5	1399	352,5	1,12	3,83	0,96	365,5	5,29	9,86
return gas temp	-9,4	15	534,6	1826	460,1	1,28	4,39	1,11	416,3	5,64	12,93
RGT= 32/90	-3,9	25	685,2	2340	589,6	1,46	4,98	1,26	469,6	6,01	16,68
liquid temp	0	32	807,7	2758	695,1	1,59	5,43	1,37	508,0	6,29	19,76
Tliq= 55/131	7,2	45	1077,5	3680	927,3	1,85	6,33	1,60	581,0	6,83	26,65