

KL-Series and K-Series Pallet Standardization

Rationale

With introduction of the new KL-Series, Secop is introducing a new KL packaging layout for EPS pallets. The main modification is in the different position of compressors in each layer on the pallet.

The rationale behind the modification is in the changed compressor shell size for KL-Series compressors compared to the K-Series (formerly KAP-PA) housing shell. To ensure 100 pcs. per pallet, the compressors have to be shifted in rows in one layer. The external dimensions of packaging and quantity per pallet will remain unchanged. See Figures 1 and 2.

Benefits

The new KL packaging will also be introduced for residential K-Series compressor models in order to standardize KL- and K-Series compressors, which will provide benefits to the ordering system and handling for our customers and Secop.

Rollout Date

Current packaging will be phased out and new packaging will be gradually implemented starting in September 2022. Please note, Secop may ship compressors in both packaging versions as one delivery during this period.

Code Numbers

Code numbers will not be affected by this modification and remain unchanged.

For any further questions, please feel free to contact your personal Secop representative.

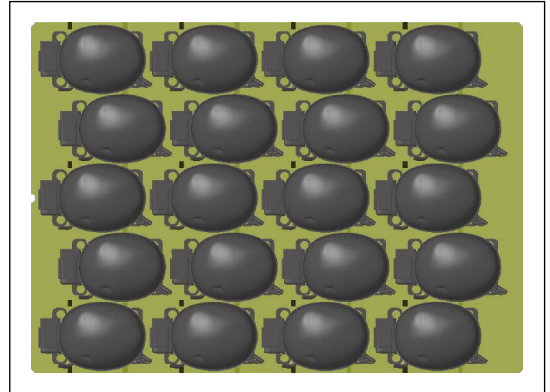


Fig.1 New KL-, K-Series pallet

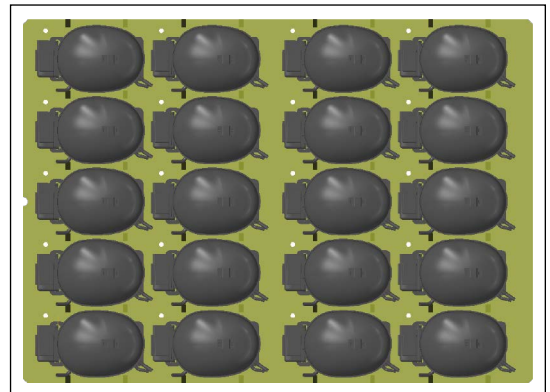


Fig.2 Previous K-Series pallet