

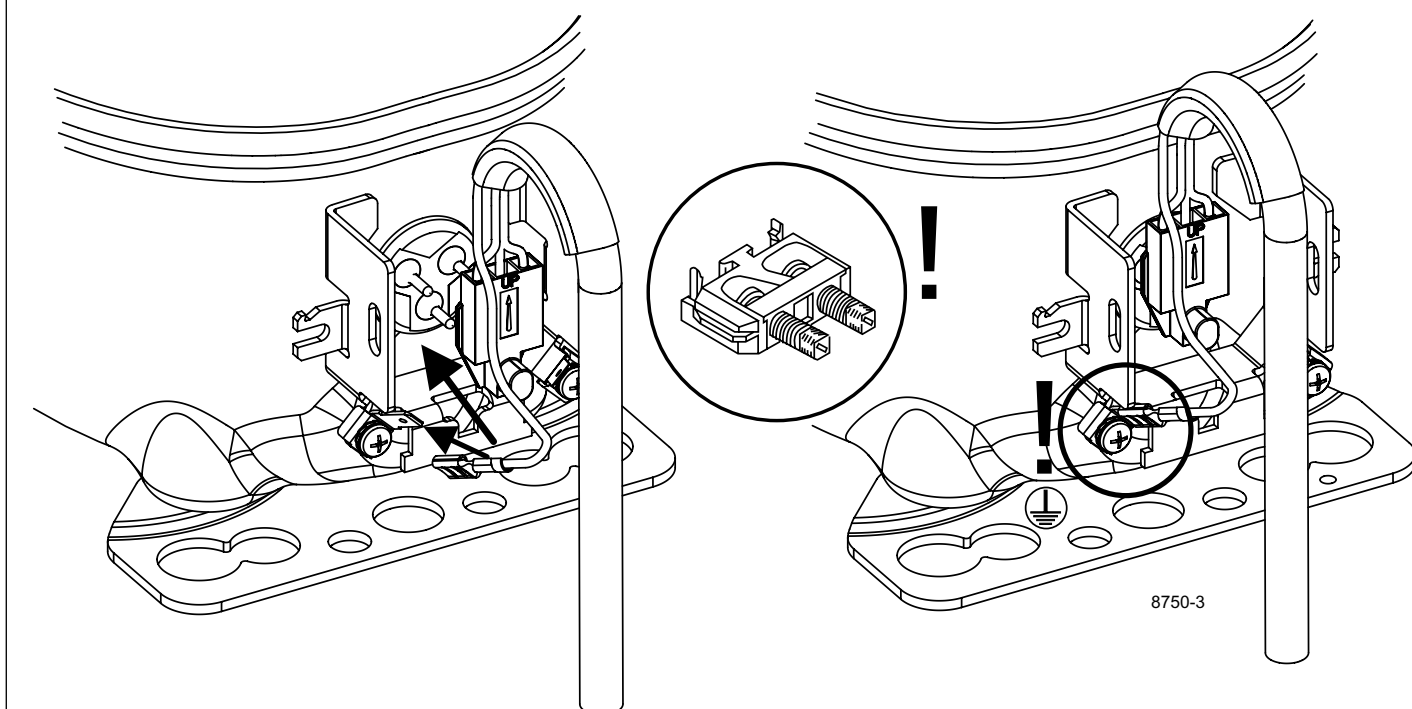
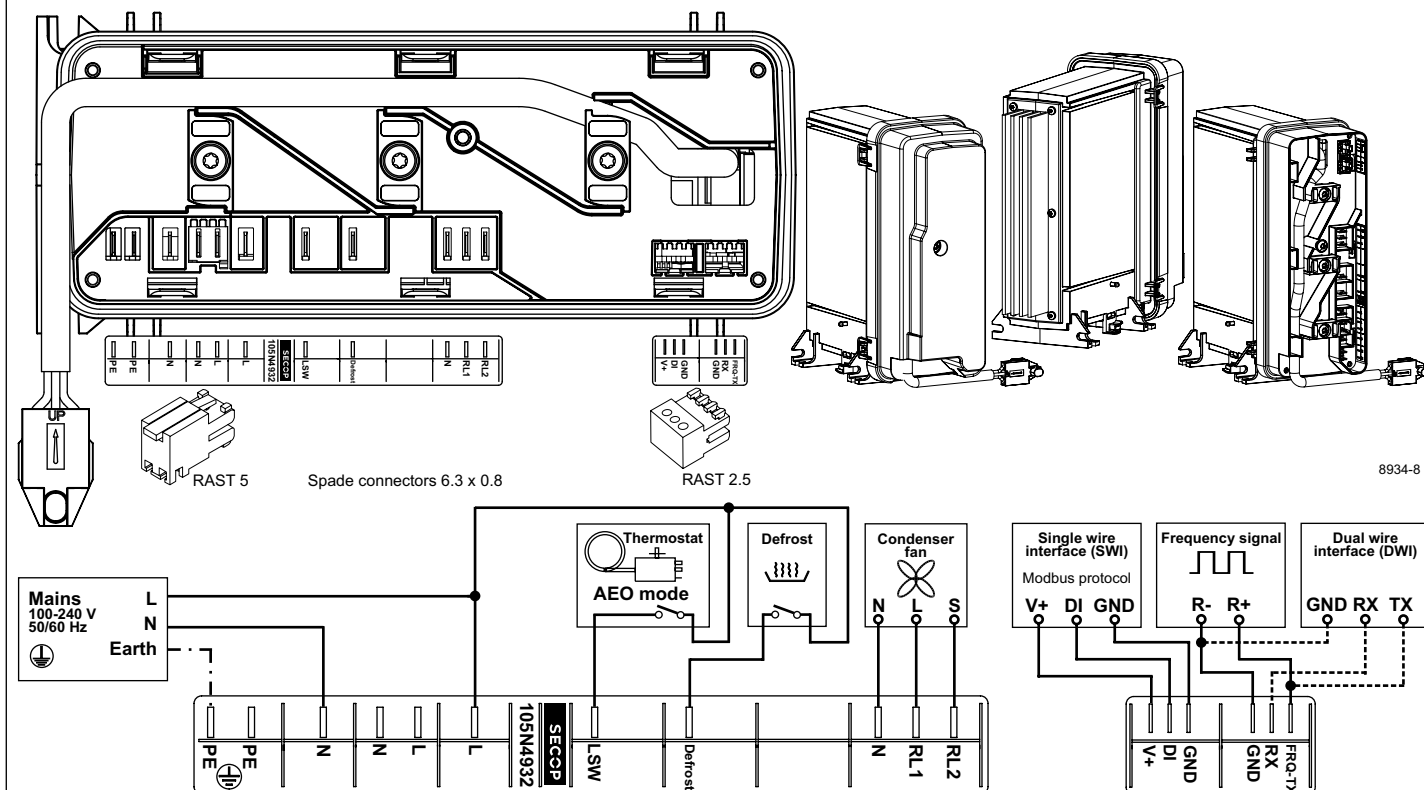
Instructions

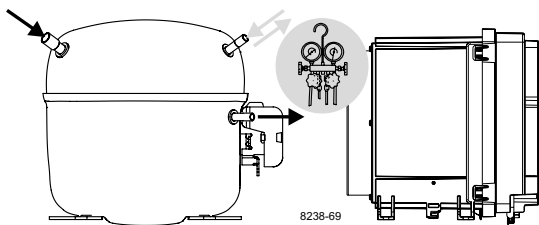
SLVE Compressors

100-240V 50/60Hz
105N4932
Controllers

SECCP

Keep electrical equipment
clear from oil, chemicals,
and water





Instructions

SLVE Compressors
100-240V 50/60Hz
105N4932
Controllers

SECOP

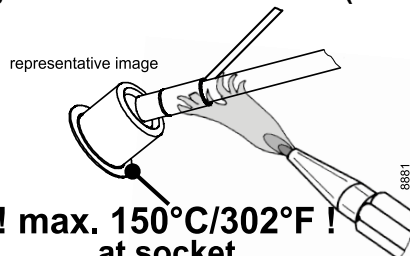
Keep electrical equipment
clear from oil, chemicals,
and water



Service/Repair R290



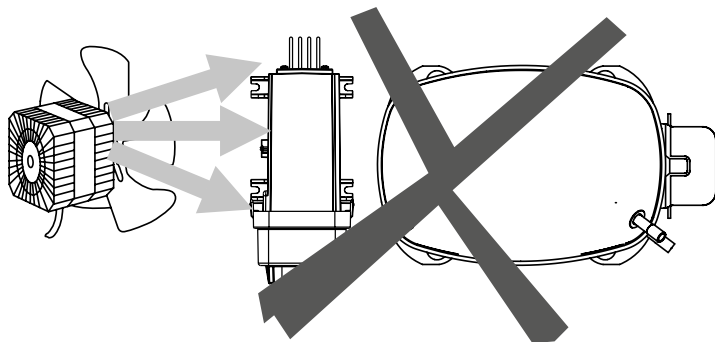
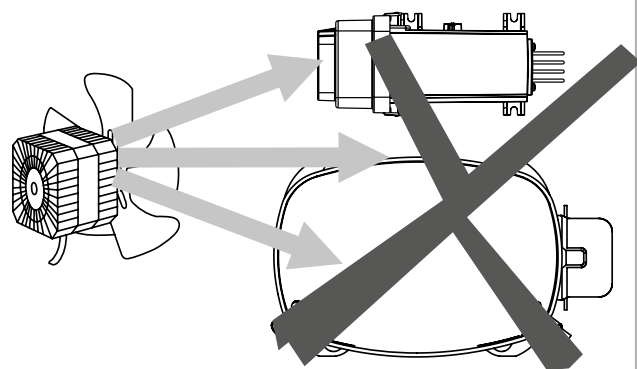
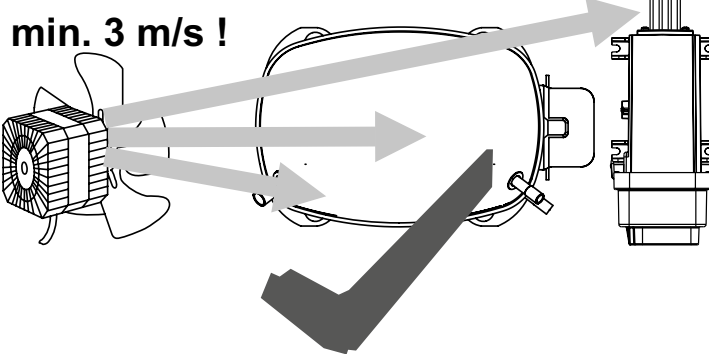
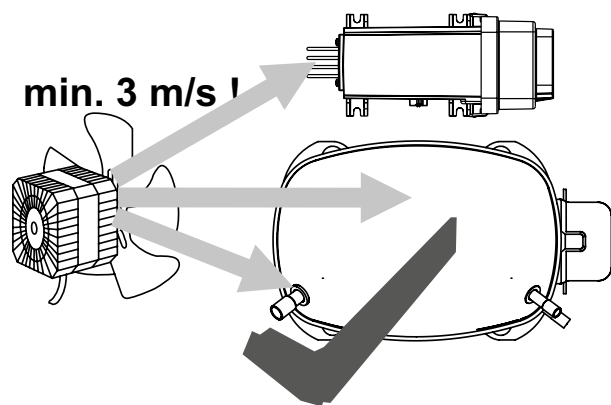
Brazing on Suction Connectors (Direct Intake)



**! max. 150°C/302°F !
at socket**

brazing solder: phosphor (LP7) or silver

Refer to Product Bulletin: **Brazing on Suction Connectors
(Compressors with Direct Suction Intake)**



8948

Airflow	3 m/s
Operating conditions	+ 5 °C to 43 °C - humidity < 90 % rH non condensing
Storage conditions	-25 °C to 70 °C - humidity < 90 % rH non condensing
Supply voltage	100-240 V (± 10 %)
Frequency	50/60 Hz
Input power, max.	1000 W

Secop accepts no responsibility for possible errors in catalogs, brochures, and other printed material. Secop reserves the right to alter its products without notice. This also applies to products already on order provided that such alterations can be made without subsequential changes being necessary to specifications already agreed. All trademarks in this material are the property of the respective companies. Secop and the Secop logotype are trademarks of Secop GmbH. All rights reserved. www.secop.com