

Single Pack NLE11MNDX 220-240V 50Hz CSCR

Single pack code number: **195B4834**

| Position | Title | Code | Amount |
|----------|--|----------|--------|
| 1 | Compressor NLE11MNDX | 105H7103 | 1 |
| 2 | Start equipment NLE | 117U8201 | 1 |
| 3 | Starting capacitor (80µF 260V) | 117U5353 | 1 |
| 4 | Run Capacitor (10µF 450V, 6.3mm) | 117-7166 | 1 |
| 5 | Run capacitor bracket | 117-0314 | 1 |
| 6 | Cover NLE | 117U1038 | 1 |
| 7 | Cord relief | 103N1007 | 1 |
| 8 | Screw for bracket M4x8mm | 117-0301 | 1 |
| 9 | Bolt joint for one compressor M6 ø16mm | 118-1917 | 1 |

Secop GmbH • Lise-Meitner-Straße 29 • 24941 Flensburg, Germany • Tel: +49 461 4941 0 • www.secop.com

Secop accepts no responsibility for possible errors in catalogs, brochures, and other printed material. Secop reserves the right to alter its products without notice. This also applies to products already on order provided that such alterations can be made without subsequent changes being necessary to specifications already agreed. All trademarks in this material are the property of the respective companies. Secop and the Secop logotype are trademarks of Secop GmbH. All rights reserved.

Model

| | | | | |
|-------------|------------------|------------------|-------------|-----------------|
| Designation | NLE11MNDX | 220-240V/50Hz 1~ | Sales code: | 105H7103 |
|-------------|------------------|------------------|-------------|-----------------|

Compressor design

| | | | |
|----------------------------|---------------------------------|-----------------------|----------------------------------|
| Oil type | Polyolester | Refrigerant(s) | R290 |
| Oil viscosity | 32cSt | Displacement | 11,15cm ³ / 0,68cu.in |
| Oil quantity | 298cm ³ / 10,1fl.oz | Compressors on pallet | |
| Refr. charge - tech. limit | 300g / 10,6oz | | |
| Free gas volume comp. | 2360cm ³ / 79,8fl.oz | | |
| Weight | 11,8kg / 26lbs | | |
| Motor protection | external | | |
| Winding resistance main | 7,5Ω (at 25°C) | | |
| Winding resistance aux | 12,9Ω (at 25°C) | | |
| Max. winding temp. | 125°C / 257°F | | |
| Max. discharge temp. | 130°C / 266°F | | |



General - Configurations with NLE11MNDX

| Conf. 1 | |
|------------------------|---------------|
| Motor configuration | CSCR |
| Power supply (nominal) | 220-240V/50Hz |
| Number of phases | 1 |
| Voltage range | 198-254V |
| Approvals | VDE |
| Starting torque | HST |
| Note | - / - |

Applications with NLE11MNDX

| Conf. 1 | |
|-------------------------|----------|
| Refrigerant | R290 |
| Application | MBP |
| System cooling | fan 3m/s |
| Hot gas defrost | OK |
| Long interval pull down | OK |

Electrical data - Configurations with NLE11MNDX

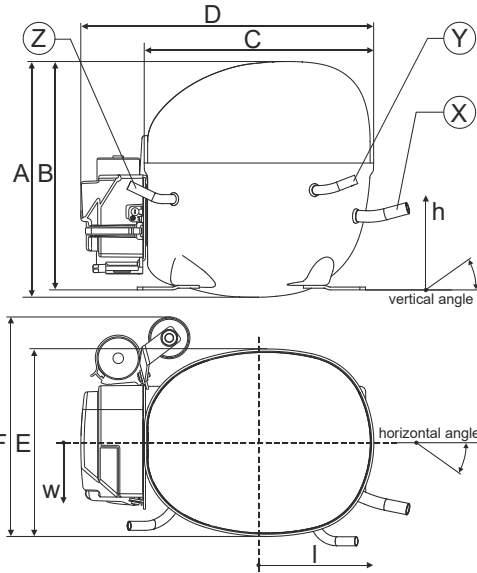
| Conf. 1 | |
|------------------------------------|-------|
| Starting device type | relay |
| Run capacitor | 10μF |
| Start capacitor | 80μF |
| LRA (locked rotor amps / 4s/ U(N)) | 16,7A |
| RLA (rated load amps / 1s/ U(N)) | 2,2A |
| Cut in current (U(N)) | 16,7A |

Model

Designation **NLE11MNDX** 220-240V/50Hz 1~ Sales code: **105H7103**

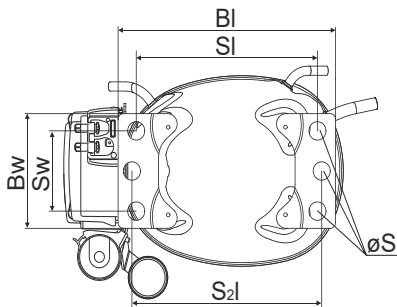
Compressor dimensions

| | | |
|----------------|-------------------|-----------------|
| Housing | A Height | 209mm / 8,23in |
| | B Height | 203mm / 7,99in |
| | C Length shell | 205mm / 8,07in |
| | D Length w. cover | 262mm / 10,31in |
| | E Width | 166mm / 6,54in |



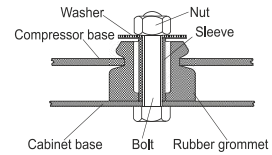
| Connectors | | Suction | Discharge | Process |
|-----------------------|------|--------------|--------------|--------------|
| | | X | Y | Z |
| Diameter | [mm] | øi 8,11-8,29 | øi 6,11-6,29 | øi 6,11-6,29 |
| (i:inside, o:outside) | [in] | øi 0,32-0,33 | øi 0,24-0,25 | øi 0,24-0,25 |
| Material | | copper | copper | copper |
| Horizontal angle | ±2° | 11° | 0° | 0° |
| Vertical angle | ±2° | 15° | 21° | 25° |
| Position l/h/w | [mm] | 140/72/59 | 94/98/87 | -109/93/74 |
| | [in] | 5,5/2,8/2,3 | 3,7/3,9/3,4 | -4,3/3,7/2,9 |
| Straight tube l. | [mm] | 12 | 12 | 12 |
| | [in] | 0,5 | 0,5 | 0,5 |

Compressor fixation

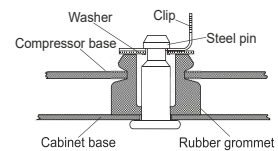


| Baseplate | [mm] | [inch] |
|-------------|------|--------|
| BI | 204 | 8.03 |
| Bw | 100 | 3.94 |
| Small holes | | |
| | [mm] | [inch] |
| SI | 170 | 6.7 |
| Sw | 70 | 2.76 |
| S2l | 178 | 7 |
| øS | ø 16 | ø 0.63 |

Bolt joint



Snap-on



Mounting accessories

| | one comp. | multi pack |
|----------------------------|-----------|------------|
| Bolt joint M6 ø16mm | 118-1917 | 118-1918 |
| Bolt joint ø1/4" ø16mm | 118-1946 | |
| Snap-on ø7,3 ø16mm | 118-1947 | 118-1919 |

Application notes

Provision for PE Grounding is located at the PE Stamp on the compressor

Model

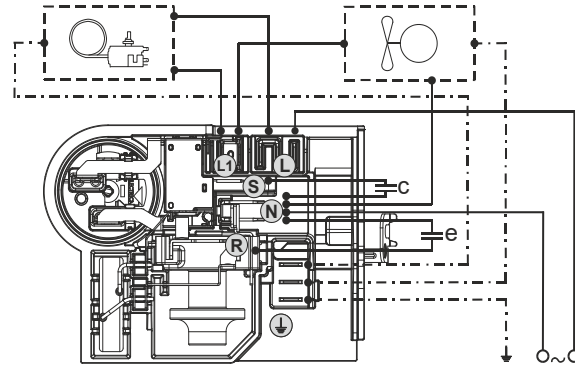
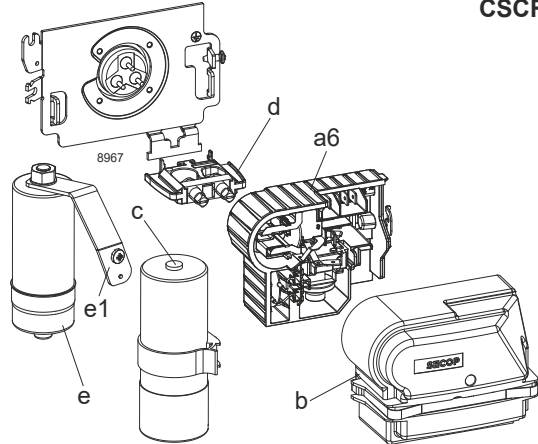
Designation **NLE11MNDX** **220-240V/50Hz** Conf. 1 Sales code: **105H7103**

Configuration

Motor configuration CSCR
 Power supply (nominal) 220-240V/50Hz 1~
 Refrigerant R290
 Application MBP
 Voltage range 198-254V
 Starting torque HST
 Approvals VDE

Electrical accessories / wiring diagram

CSCR



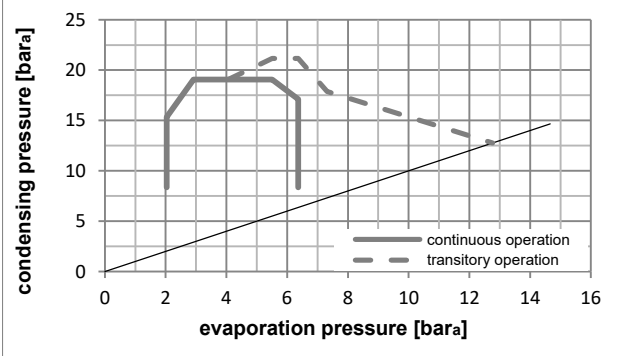
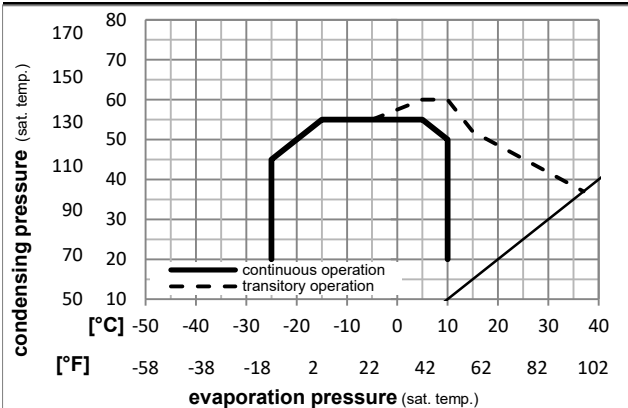
Ambient/ machine room temperatures minimum /maximum

Ambient temperature range: 10 - 43°C / 50 - 110°F

Machine room temperature range: 10 - 48°C / 50 - 119°F

Compressor cooling: fan 3m/s

Operation pressure range



Components

| | | |
|----|--------------------------------------|----------|
| a6 | NL starter kit | 117U8201 |
| c | start capacitor (80µF) | 117U5353 |
| e | run cap (10µF, 6.3mm,c.length 280mm) | 117-7166 |
| b | cover terminal board + clamp | 117U1038 |
| e1 | retaining clamp | 117-0314 |
| | screw M4x8mm | 117-0301 |
| d | cord relief | 103N1007 |

Model

Designation **NLE11MNDX 220-240V/50Hz** Conf. 1 Sales code: **105H7103**

Optimization + standard conditions

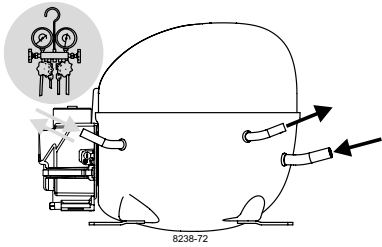
R290, 220V/50Hz, CSCR, fan 3m/s, VDE

| | | Evaporating pressure (saturation temperature) | | | | Condensing pressure (saturation temperature) | | | Return gas temp. | | | Liquid temp. | | | Cooling capacity | | | COP | EER | Power consumption | | | ASHRAE MBP |
|------|------|---|------|------|------|--|---------|----------|------------------|----------|-----------|--------------|------|-------|------------------|-------|--------|------------|-------------|-------------------|--|--|------------|
| | | pe | pc | RGT | Tliq | [W] | [Btu/h] | [kcal/h] | [W/W] | [Btu/Wh] | [kcal/Wh] | P1 | I | m | [W] | [A] | [kg/h] | ASHRAE MBP | | | | | |
| [°C] | [°F] | [°C] | [°F] | [°C] | [°F] | | | | | | | | | | | | | | | | | | |
| -7 | 20 | 54 | 130 | 35 | 95 | 46 | 115 | 999,3 | 3413 | 860,0 | 2,14 | 7,30 | 1,84 | 467,3 | 2,22 | 11,40 | | | | | | | |
| -10 | 14 | 55 | 131 | 32 | 90 | 55 | 131 | 799,5 | 2730 | 688,0 | 1,79 | 6,11 | 1,54 | 447,1 | 2,13 | 10,11 | | | cecomaf MBP | | | | |
| -10 | 14 | 45 | 113 | 20 | 68 | 45 | 113 | 874,0 | 2985 | 752,2 | 2,17 | 7,39 | 1,86 | 403,7 | 1,93 | 10,73 | | | EN12900 MBP | | | | |
| -7 | 20 | 49 | 120 | 18 | 65 | 49 | 120 | 930,4 | 3178 | 800,7 | 2,12 | 7,22 | 1,82 | 439,8 | 2,10 | 12,08 | | | ARI540 MBP | | | | |
| -10 | 14 | 45 | 113 | 32 | 90 | 45 | 113 | 909,9 | 3107 | 783,1 | 2,25 | 7,70 | 1,94 | 403,7 | 1,93 | 10,41 | | | opt | | | | |
| -25 | -13 | 45 | 113 | 32 | 90 | 45 | 113 | 499,1 | 1705 | 429,6 | 1,59 | 5,42 | 1,37 | 314,5 | 1,57 | 5,63 | | | opt | | | | |

Performance tables

R290, 220V/50Hz, CSCR, fan 3m/s, VDE

| | pe | | Cooling capacity | | | COP | EER | P1 | I | m | |
|------------------|------|------|------------------|---------|----------|-------|----------|-----------|-------|------|--------|
| | [°C] | [°F] | [W] | [Btu/h] | [kcal/h] | [W/W] | [Btu/Wh] | [kcal/Wh] | [W] | [A] | [kg/h] |
| [°C / °F] | -25 | -13 | 499,1 | 1705 | 429,6 | 1,59 | 5,42 | 1,37 | 314,5 | 1,57 | 5,63 |
| cond. pressure | -20 | -4 | 617,8 | 2110 | 531,7 | 1,78 | 6,09 | 1,53 | 346,6 | 1,69 | 7,00 |
| pc= 45/113 | -15 | 5 | 754,0 | 2575 | 648,9 | 2,00 | 6,84 | 1,72 | 376,6 | 1,82 | 8,58 |
| return gas temp. | -10 | 14 | 909,9 | 3107 | 783,1 | 2,25 | 7,70 | 1,94 | 403,7 | 1,93 | 10,41 |
| RGT= 32/90 | 0 | 32 | 1289,5 | 4404 | 1109,8 | 2,91 | 9,92 | 2,50 | 443,9 | 2,12 | 14,96 |
| liquid temp | 5 | 41 | 1517,6 | 5183 | 1306,1 | 3,34 | 11,39 | 2,87 | 454,9 | 2,17 | 17,76 |
| Tliq= 45/113 | 10 | 50 | 1774,2 | 6059 | 1526,9 | 3,87 | 13,22 | 3,33 | 458,2 | 2,18 | 20,96 |
| [°C / °F] | -25 | -13 | 431,7 | 1474 | 371,5 | 1,30 | 4,43 | 1,12 | 333,0 | 1,65 | 5,37 |
| cond. pressure | -20 | -4 | 539,1 | 1841 | 464,0 | 1,45 | 4,95 | 1,25 | 372,1 | 1,80 | 6,74 |
| pc= 55/131 | -15 | 5 | 661,0 | 2257 | 568,9 | 1,61 | 5,50 | 1,39 | 410,5 | 1,97 | 8,31 |
| return gas temp | -10 | 14 | 799,5 | 2730 | 688,0 | 1,79 | 6,11 | 1,54 | 447,1 | 2,13 | 10,11 |
| RGT= 32/90 | 0 | 32 | 1134,9 | 3876 | 976,7 | 2,22 | 7,60 | 1,91 | 510,3 | 2,42 | 14,58 |
| liquid temp | 5 | 41 | 1336,2 | 4564 | 1150,0 | 2,50 | 8,54 | 2,15 | 534,6 | 2,53 | 17,33 |
| Tliq= 55/131 | 10 | 50 | 1562,9 | 5338 | 1345,1 | 2,83 | 9,66 | 2,43 | 552,6 | 2,62 | 20,49 |



8238-72

NLE Plus Compressors

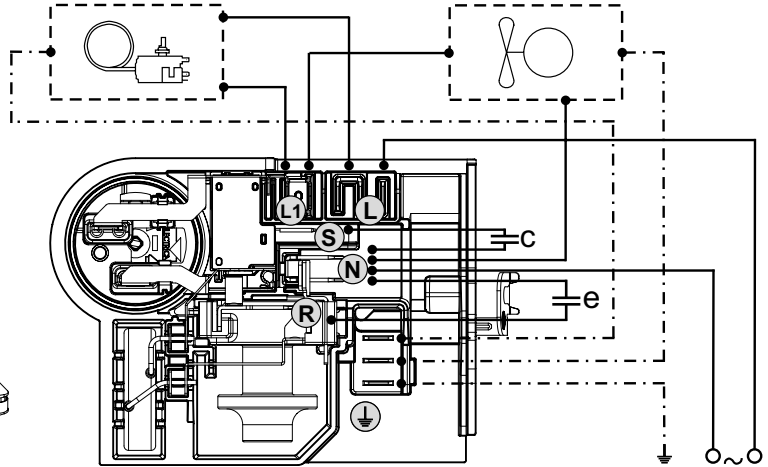
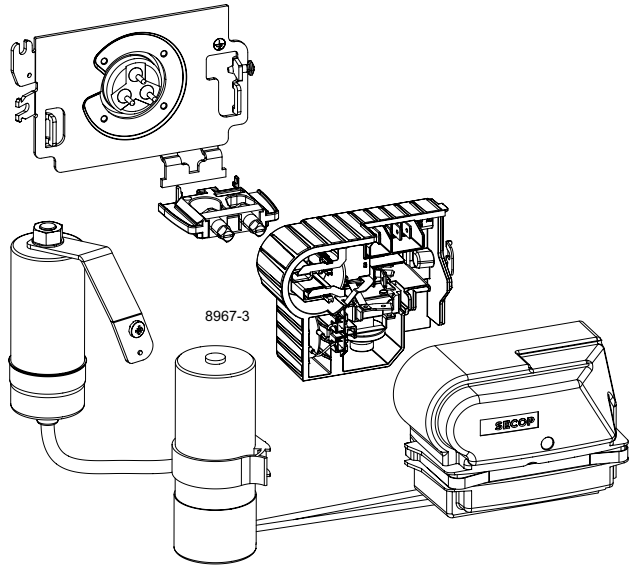
SECCP

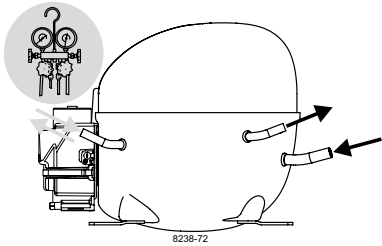
Keep electrical equipment clear from oil, chemicals, and water



When operated with a flammable refrigerant, only spark-proof starting equipment is allowed.

CSCR





NLE Plus Compressors



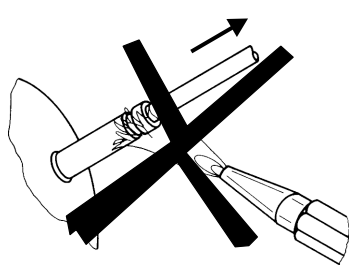
Keep electrical equipment clear from oil, chemicals, and water



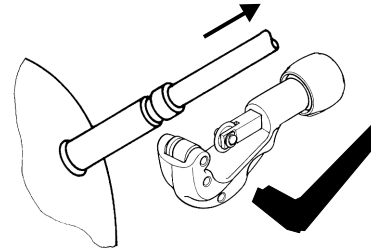
When operated with a flammable refrigerant, only spark-proof starting equipment is allowed.



Service/Repair – R290, R600a, R170, R1270, R1234yf (applies to all flammable refrigerants)



8545



Dismantling, recycling, disposal: At the end of a compressor's lifecycle, proceed by separating and storing components according to their environmental impact. Parts that may cause pollution must be clearly identified and handled separately, ensuring appropriate disposal. Refrigerant gas must not be released into the environment and should be recovered by qualified operators. Compressor oil must also be collected separately. The compressor should be disposed of at specialized disposal centers in accordance with the applicable regulations. **Subject to modifications/alterations. www.seccp.com**